

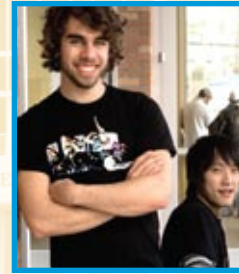


*Not just bigger. Better.*



Annual Report, 2007-2008





## TABLE OF CONTENTS

- 4 **president's message** | *Getting better all the time*
- 6 **strategic plan** | *The journey to the future has begun*
- 8 **capital campaign** | *Creating the leverage needed to achieve*
- 10 **campus development** | *Building new places to think and explore*
- 12 **world view** | *Global learning opens minds, opens doors*
- 14 **student-centered learning** | *The focal point for all we do*
- 16 **viewpoints** | *Thought leaders who challenge and inspire us*
- 18 **teamwork** | *Sports made our season, made us proud*
- 20 **outreach** | *The greatest gifts also bring life lessons*
- 22 **going green** | *Responsible stewards of the environment*
- 24 **comings and goings** | *KSU says farewell and welcome*
- 26 **commencement** | *Not an ending, but a beginning*
- 28 **faculty spotlight** | *Enhancing academics and learning*
- 30 **applause and affirmation** | *Measures of our success*



**You have heard the story of Kennesaw State's phenomenal growth.** The university's incredible physical expansion in just 45 years is a laudable success story in its own right. But there's also another story: KSU's increasing academic profile, our rising national reputation and growing external support.

Fiscal year 2008 is a shining example of how we have become not just bigger, but better! This was a year when KSU opened new doors, scaled new heights and reached new milestones.



# Getting better all the time

## president's message

I am pleased to present our fiscal year 2008 annual report. During the past year, KSU enjoyed another momentous period in its upward trajectory of growing bigger and better.

The year marked an important milestone in the university's history — surpassing an enrollment of 20,000 students from 142 countries. KSU celebrated record-breaking commencement exercises — with 4,325 students receiving degrees. Student-quality indicators, such as SAT scores, retention and graduation rates, continued to climb as well.

But numbers alone do not tell the entire story of Kennesaw State's increasing reputation.

To ensure success in the 21st century, students must be prepared for a world in which global competition is a reality. KSU is preparing students for the new global economy through the university's Global Learning for Engaged Citizenship initiative, called "Get Global."

In addition, KSU's outreach into the global community continued. KSU will be the recipient of a Confucius Institute focusing on Chinese language and culture education. The university also participated in the historic mission of Georgia political, business and community leaders to Shanghai this spring. Partnerships with institutions in other nations also flourished, as did study-abroad programs.

During the past fiscal year, we also made considerable progress on the university's 2007-2012 Strategic Plan — five ambitious goals and fifty action steps that will help KSU become an even greater learning-centered institution.

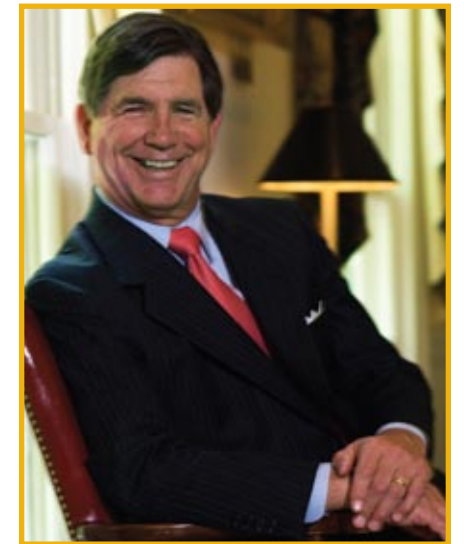
Pragmatic optimism and enthusiasm drive KSU's growth — taking a realistic approach to serving and accommodating the needs of both a growing student body and the region and the state. This can-do spirit propels ambitious goals and dreams

for KSU's bright and promising future.

This optimism is needed to meet future needs. The Board of Regents of the University System of Georgia has increased its financial support to Kennesaw State, as it charges the university to help accommodate more than 100,000 new students expected to enroll in the state's public colleges and universities by 2020 — 70,000 in metro Atlanta alone.

In this report, you will see the many ways in which the university is deeply indebted to the KSU Foundation for its role in enhancing the university's growth. One of the greatest efforts ever to meet the university's needs for the future was launched in October 2007. With the KSU Foundation's support, Kennesaw State's comprehensive capital campaign seeks to raise \$75 million to enhance the university's infrastructure and academic offerings, and to provide scholarship and athletics

"As the university celebrates its 45th anniversary, there is much to be proud of, and much more to be achieved."



President Daniel S. Papp

opportunities for students.

As KSU moves forward in this new era, two of the university's greatest champions who have been key to raising academic quality have relinquished their roles. Nancy S. King, vice president for student success and enrollment services, and Timothy S. Mescon, dean of the Michael J. Coles College of Business, are both nationally recognized leaders who enhanced student learning and the university's reputation in innumerable ways. King retired in May 2008 after 35 years at the university; Mescon was selected by the University System of Georgia to assume the presidency of our sister institution, Columbus State University. We wish them both success in their future endeavors, and they will remain dear members of the KSU community.

We also named new leaders who will help further KSU's path to excellence — Arlinda Eaton, dean of the Leland and

Clarice C. Bagwell College of Education; and Jennifer Wade-Berg, KSU's new chief diversity officer. Both were named in late fiscal year 2008 and joined the university at the start of fiscal year 2009. In addition, KSU administrators and faculty who have taken new leadership roles include Teresa M. Joyce, named to the new post of associate provost; and biology professor Robert C. Paul, named director of sustainability, another newly created role.

As the university celebrates its 45th anniversary during the 2008-2009 academic year, there is much to be proud of, and much more to be achieved. In fiscal year 2009, we will continue to strengthen our stature as a great learning-centered university by:

- raising academic quality by reducing student-faculty and student-staff ratios, and enhancing global learning opportunities and other scholarship;

- progressing with the construction of the university's \$60 million Health Sciences Building, as well as other needed facilities, such as a new dining hall, to accommodate growth;
- working with the University System of Georgia to establish new doctorate degrees — including a Doctor of Nursing degree to provide nursing educators for the state; and the university's first Ph.D., a Doctor of Philosophy in International Policy; and
- beginning assessments of the university's diversity climate and ecological sustainability, in order to become a more diverse and environmentally friendly institution.

With the support of Kennesaw State's friends and champions, as well as its students, faculty and staff, we will achieve this vision. We welcome you to join us in this venture, and invite you to share in our success.

# The journey to the future has begun



Through programs such as LINK/Engage and the Presidential Ambassadors, the university increased student leadership roles and connected students to high-profile community leaders, such as IBM's Ann Cramer, a long-time community relations figure in Atlanta (right).



The Board of Regents approved several new degree programs, most notably the university's second doctorate, the Doctor of Business Administration — the only degree of its kind in the state.

## strategic plan

Kennesaw State's 2007-2012 Strategic Plan is the university's road map to continued progress toward creating one of the best learning-centered, comprehensive universities in the country.

The university made important progress during fiscal year 2008 in achieving the plan's goals.

### STRATEGIC PLAN GOALS:

- enhance and expand academic programs and delivery;
- improve retention, progression and graduation (RPG) rates while maintaining high quality;
- expand campus resources and enhance campus infrastructure;
- enhance student life activities and prepare students to be leaders; and
- improve service, strengthen accountability and establish a stronger sense of community.



In April 2008, the Board of Regents approved a \$92 million budget allocation for KSU for fiscal year 2009 — an increase of nearly \$12.2 million from the prior year.



## PROOF POSITIVE

KSU is succeeding in getting more students than ever to stay in school, make progress toward their degrees and graduate on time.

In the last three years, KSU's fall-to-fall first-year student retention rate increased from 72 to 76 percent, while the university's six-year graduation rate climbed to an all-time high of 33 percent — a rate which reflects KSU's large population of non-traditional students, who often balance work and family responsibilities with academics.

The university has implemented, or is planning to implement, a host of programs aimed at improving RPG rates, including initiatives that focus on improving advising, intervention for at-risk students, peer tutoring and expanded merit- and need-based financial aid.





**A FIRM FOUNDATION  
FOR THE FUTURE**

KSU has advanced by leaps and bounds with the support of the Kennesaw State University Foundation. And with the Foundation's help, KSU will continue its upward momentum.

Over the last decade, the KSU Foundation has provided the university with nearly \$300 million in land and buildings — including houses adjacent to the campus, residence halls, parking decks and offices — helping to grow KSU through smart investments and fundraising. The Foundation also is active in growing the institution academically, through endowed scholarships for students as well as funds and endowments to encourage top scholarship and attract top faculty.

The Foundation presently is led by real estate businessman and Chair Norman Radow, and is comprised of trustees who are business and community leaders. In the years to come, the Foundation will ensure that KSU will develop into a greater learning-centered institution.

For more about the foundation, visit [www.kennesaw.edu/foundation](http://www.kennesaw.edu/foundation).

# Creating the leverage needed to achieve

## capital campaign

During fiscal year 2008, KSU launched its first-ever comprehensive capital campaign, “The New Faces of Kennesaw — The Campaign For Our Future.” This historic campaign seeks to raise \$75 million in five years to benefit academic programs, facilities, scholarships, faculty and staff development, and athletics.

The KSU Foundation launched the campaign and leads the effort. U.S. Sen. Johnny Isakson serves as honorary chairman of the campaign, with co-chairs Bob M. Prillaman, retired senior vice president, Caraustar Industries; and Chester A. Austin, co-founder, Tip Top Poultry Inc.

Read more about the campaign’s goals, KSU’s generous donors and other fundraising news at [www.kennesaw.edu/newfaces](http://www.kennesaw.edu/newfaces).



Thomas M. Holder, former chair of the KSU Foundation, pledged in 2007 \$1 million for endowed faculty scholarships for professional development. He also was the recipient of the university’s 11th honorary doctorate in humane letters in December 2007.



Bobbie M. Bailey, who previously donated \$1.75 million to name the Dr. Bobbie Bailey & Family Performance Center, generously made a gift of 27 Steinway pianos in fall 2007, earning Kennesaw State designation as an “All-Steinway School.”



John Clendenin and his family donated \$1 million in June 2008 to endow fellowships for graduate students and doctoral candidates. The Clendenins have been ardent supporters of the university, contributing \$1 million in 1999 to equip the university’s Ann and John Clendenin Computer Science Building.



Leonard Witt, Robert D. Fowler Distinguished Chair in Communication and scholar of new media, is the beneficiary of a new eminent scholar post for which the Board of Regents is providing \$500,000 in matching funds.



# Building new places to think and explore



The university celebrated the opening of the Dr. Bobbie Bailey & Family Performance Center, a \$9 million state-of-the-art gem that includes an art gallery, performance hall and rehearsal space.



Ground was broken in April for an addition to the Joe Mack Wilson Building. The facility will include student practice rooms and faculty studios for the School of Music, as well as a 125-seat black box theater.



Construction of the university's Central Parking Deck neared completion during summer 2008. The deck adds 2,650 parking spaces on campus as part of comprehensive measures to improve transportation and parking at Kennesaw State.

## campus development

Kennesaw State continues to enhance its campus infrastructure to accommodate increasing student demand and to position the institution as a top-notch university.

In fiscal year 2008, dust and noise from the rapid pace of construction gave birth to new facilities in which to think, explore and interact with one another.



The new \$60 million Health Sciences Building, scheduled to open in May 2010, will allow KSU to increase the number of nurses it provides Georgia.

## University Village Suites



## NEW HOUSING

As part of KSU's continuing commitment to offer the best education for students, providing the opportunity for a living-learning experience is key. At the end of June 2008, a new 913-bed phase of student housing — University Village Suites — was almost complete, ready for occupancy in August 2008. The \$25 million housing phase brings the total number of student beds on KSU's campus to 3,076.

Key features of the energy-efficient facility, geared toward first-year students, include:

- a range of one- to four-bedroom suites, complete with showers, microwaves and mini-refrigerators;
- nearby retail, including a restaurant and a newsstand; and
- a satellite health clinic where students can receive care for minor ailments.



Students study abroad in Italy.

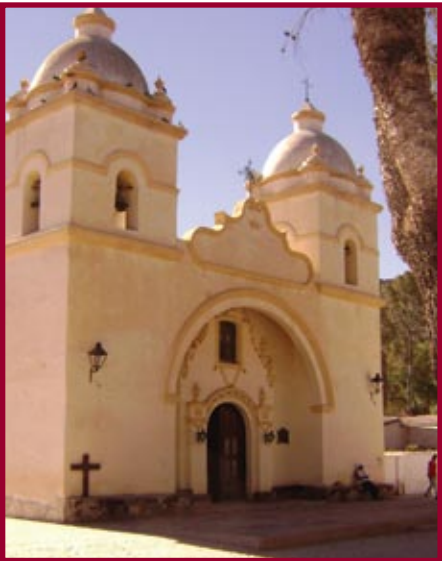


**ENHANCING  
GLOBAL RESOURCES**

KSU’s global learning fee was approved in April 2008 by the Board of Regents of the University System of Georgia. This new fee will raise about \$700,000 for study-abroad scholarships in the 2008-2009 academic year.

The \$14 per semester fee, implemented in the fall, allows KSU to expand the number and diversity of students participating in global learning experiences.

In addition to this effort, KSU works with students to seek additional opportunities for study-abroad scholarships from private entities, foreign governments and non-governmental organizations.



KSU’s study-abroad offerings, such as the new social work program in Argentina, continued to increase in popularity, with about 550 KSU students participating in more than 30 programs during 2008 — an increase of 20 percent over 2007.



Kennesaw State entered into partnerships with several international entities, including Egyptian universities and institutions focusing on educating the disabled.

# Global learning opens minds, opens doors

## world view

KSU’s reach is worldwide — a major asset of the university. During fiscal year 2008, the university continued to expand global partnerships and learning opportunities.

Kennesaw State’s global focus is part of the university’s Quality Enhancement Plan — the Global Learning for Engaged Citizenship or “Get Global” initiative — a key element of the institution’s reaccreditation plan approved by the Southern Association of Colleges and Schools in December 2007.

From formal partnerships with universities in other countries to enhanced study-abroad options for our students, KSU continued to solidify its relationships abroad.



The university featured the “Year of the Atlantic World” during 2007-2008, a series of educational programs and events coinciding with the 200th anniversary of the abolition of slave trade in Britain. Programming allowed the campus community to learn firsthand how two centuries later similar oppression and violation of human rights continue today.



Kennesaw State’s connections with the People’s Republic of China continued to flourish this past year. KSU became one of only two universities in Georgia to be awarded a Confucius Institute, a Beijing-based project funded by the Chinese government to promote China’s language and culture around the world.



# The focal point for all we do



Many KSU undergraduates participate in internships and cooperative education programs to acquire real-world experience in the workplace.



Freshman convocation for first-year students and their parents, held at the beginning of the academic year, is a special initiative of the University College — home to the university's acclaimed first-year programs.

KSU senior Silvia Segura



## student-centered learning

As a learning-centered institution, students are at the heart of KSU, and they are achieving more than ever before. KSU's incoming first-year students boasted an average SAT score of 1066 — 8 percent higher than the state average and 5 percent higher than the national average. More than 1,000 KSU students obtained real-world experience through internships and cooperative education opportunities during the 2007-2008 academic year.

Over the past year, the Board of Regents approved new KSU degrees to further expand students' academic options, including:

- a Doctor of Business Administration;
- a Master of Science in Applied Exercise and Health Science;
- an online Bachelor of Business Administration in Management;
- a B.B.A. in international business; and
- a satellite Bachelor of Science in Nursing program at Appalachian Technical College in Jasper, Ga.



Kennesaw State's campus offers a host of activities and leadership opportunities for all students.

## SUCCESS FOR THE REAL WORLD

A KSU education prepares students to meet real-world challenges in an increasingly competitive, global economy. In January 2008, KSU was among only three institutions of higher learning in the United States honored with the 2008 "Award for Institutional Progress in Student Learning Outcomes" from the Council for Higher Education Accreditation. The award reaffirms KSU's success in preparing its graduates for the work force of the 21st century.

Among the highlights for which the university was recognized:

- From 2001 to 2004, nearly all KSU graduates were employed — 96 percent of bachelor's degree recipients, 92 percent of master's of business administration recipients and 92 percent of all other graduates.
- Nearly three-fourths of KSU bachelor's degree holders and M.B.A. graduates were employed in fields related to their majors. An equally high percentage of all other graduates reported that their KSU education was beneficial in their current careers.





## ON THE ELECTORAL STAGE

KSU had the opportunity to serve as a backdrop for a part of the grand political drama of the historic run-up to the 2008 U.S. presidential election.

As a guest of the KSU Young Democrats, former President Bill Clinton visited the university during the Democratic presidential primaries, stumping on behalf of his wife, Sen. Hillary Clinton. The event was held just before the critical February “Super Tuesday” primary during the 2008 race for the White House.

President Clinton’s presence marked the second time in KSU history that a U.S. president visited the university, preceded by former President Jimmy Carter in 1986. During that visit, Carter and his wife, Rosalynn, introduced the widow of slain Egyptian President Anwar Sadat, Jehan Sadat.

Clinton’s event, convened with a 24-hour notice, lasted 90 minutes and attracted hundreds of attendees in freezing temperatures to capture a glimpse of the former head of state.

# Thought leaders *who challenge and inspire us*

## viewpoints

Kennesaw State served as the stage for thought leaders who brought diverse perspectives on important national and global issues to the university and local community during fiscal year 2008.

From a former U.S. president and other political figures, to leaders in business, health, music and higher education, visitors to Kennesaw State helped enlighten and engage students, faculty and staff on the issues of the day.



Before entering the race for the White House as presidential candidate for the Libertarian Party in 2008, former U.S. Rep. Bob Barr served as an adjunct faculty member in KSU’s Coles College of Business, lecturing M.B.A. students on privacy in business in the 21st century.



Vicki Ruiz, chair of the University of California-Irvine’s history department, was one of several distinguished academics from across the United States who came to KSU in 2008 to share their research and scholarship. Ruiz talked about Latinas in the U.S., going back to the 16th century.



During KSU’s observance of the Martin Luther King Jr. holiday, activist and musician Chuck D (born Carlton Ridenhour) challenged students to embrace education as a path toward success in society.



In spring 2008, Kennesaw joined with U.S. Rep. Phil Gingrey to host Dana Gioia, chair of the National Endowment for the Arts, during an NEA grant-writing workshop and a tour of KSU’s art galleries and the Bentley Rare Book Gallery.



# Sports made our season, made us proud



Club teams in ice hockey, rugby, wrestling and lacrosse continued to advance, and new ones, such as wakeboarding, were launched.



KSU inaugurated the Larry Nelson Collegiate Invitational golf tournament, named for PGA golfer and alumnus Larry Nelson.

NCAA basketball



## teamwork

Kennesaw State athletics — including varsity, intramurals and club sports — help broaden the student experience. Cheering on the Fighting Owls serves as a rallying point for the entire university community by celebrating teamwork and camaraderie. KSU's sports teams and clubs stole the national spotlight during the past year, and the groundwork was laid to help boost the athletics program to even higher levels of success.

Learn more at <http://ksuowls.cstv.com>.



Men's indoor and outdoor track teams overcame huge odds to win the Atlantic Sun Championship.



For the first time in the university's history, a KSU intercollegiate athletics team — women's soccer — made it to an NCAA Division I championship by clinching the Atlantic Sun Soccer Championships in November 2007.

## NCAA SELF-STUDY

As an NCAA Division I school, the university embarked on a year-long, campuswide study of its athletics program. The study, part of the NCAA Division I athletics certification program, covers academic integrity, governance and rule compliance, gender and racial equity, and the well-being of student athletes.

The purpose of the certification program is to help ensure integrity in the institution's athletics operations. It opens up athletics to the rest of the college community and the public, and institutions benefit by increasing campuswide awareness and knowledge of the athletics program.

The committee responsible for KSU's study includes President Daniel S. Papp and representatives from a broad spectrum of the campus community, including faculty, administrators, staff, campus governance bodies, student athletes, student government, alumni, the KSU Foundation, the KSU Athletics Board and local community leaders.

For more about the self-study, visit:

<http://www.kennesaw.edu/athleticsboard/>





### A HELPING HAND TO ENTREPRENEURSHIP

Among KSU's highly successful outreach efforts in the local community is the Edge Connection, which seeks to grow "micro-enterprises" to ensure that entrepreneurs have a healthy start to success. The center, headed by philanthropist Patricia Harris, has won many awards for its outreach to women and minorities, as its work helps create economic self-sufficiency for low- to moderate-income individuals.

In June 2008, officials broke ground on a new Enterprise Center, which will serve as a business incubator, located at the corner of U.S. Highway 41 and Kennesaw Due West Road. Scheduled to open in 2009, the 30,000-square-foot facility will include classrooms, a production center, an events space and a commercial-grade kitchen.

For more about the Edge Connection, visit [www.theedgeconnection.com](http://www.theedgeconnection.com).

# The greatest gifts also bring life lessons

## outreach

Kennesaw State serves a valuable role as a community and global partner in solving pressing problems.

From helping local small business owners deal with the consequences of Georgia's exceptional 2007 drought, to providing relief efforts in response to the devastating 2008 earthquake in China and providing educational resources in the community, KSU was there to support those in need.



In response to the earthquake in China's Sichuan province in May 2008, KSU organized a fundraiser, contributing thousands of dollars to help relieve the suffering.



KSU is home to many educational initiatives that bring our academic expertise to teachers and students in area schools. Such programs include the CyberTech Initiative, which aims to attract underrepresented high school students into the sciences.



Kevin Powell, noted author and 2008 New York congressional candidate, led a discussion during the University System of Georgia's African-American Male Initiative's "Best Practices Conference," which drew more than 250 attendees to the campus in fall 2007. KSU is home to the USG's nationally recognized AAMI program.



More than 1,000 KSU students volunteered at organizations like Cobb County's MUST Ministries — which has provided food to thousands during 2008's economic downturn — through the Volunteer Kennesaw program. Other volunteer activities included work with the March of Dimes, the Marietta Senior Center, Habitat for Humanity and Project Open Hand Atlanta.



# Responsible stewards of the environment



In fall 2007, KSU received Silver Leadership in Energy and Environmental Design (LEED) certification from the U.S. Green Building Council for its Social Sciences Building, which was designed and built to be environmentally friendly.



Kennesaw State launched in fall 2007 an interdisciplinary program in environmental studies that allows undergraduates to focus on either science or policy.

## going green

Kennesaw State continues to be a steward of the environment. From efforts to build sustainable facilities and installing water-saving devices, to focusing on degree programs in environmental studies, KSU is at the forefront of organizations, businesses and institutions demonstrating a serious commitment to environmental responsibility.

In June 2008, KSU named biology professor Robert C. Paul as the university's first director of sustainability. Paul will oversee environmentally sustainable operational and academic initiatives — merging green operational efforts, such as buildings and plant operations, with educational efforts in sustainability.



KSU is saving precious water resources by replacing faucets with water-efficient fixtures, checking for water leaks, enforcing compliance with outdoor watering restrictions, and limiting water use in cleaning facilities.



Robert C. Paul



## ALTERNATIVE COMMUTING

Like clockwork every summer, metro Atlanta is blanketed by a haze of pollutants emanating from the millions of vehicles on the road, from particulate matter to ground-level ozone — making skies gray and breathing difficult. Steady increases in fuel prices also packed a wallop on consumers' commuting costs. In 2008, KSU helped make a dent in pollution by offering alternative commuting options — something for which the university has gained recognition from the U.S. Environmental Protection Agency as one of the "Best Workplaces for Commuters."

Such alternatives include carpooling, vanpooling, biking and walking programs, telecommuting, and the Guaranteed Ride Home program in case of emergency or illness.

Vanpools have proven to be particularly popular for KSU employees who live in neighboring counties, including Bartow, Cherokee and Paulding. In 2007, the university had only one registered vanpool. By the end of June 2008, there were five, and more are in the works for fiscal year 2009.



Teresa M. Joyce



## FAMILIAR FACES, NEW ENDEAVORS

Familiar faces in academia were tasked with new duties during 2008 — duties important to KSU's efforts to become one of the best learning-centered institutions in the country, at the forefront of trends and issues in education and sustainability.

Teresa M. Joyce, dean of KSU's Graduate College, was named to the newly created position of associate provost. Joyce is now responsible for managing strategic planning for academic affairs and supervising the university's special learning centers, such as the Institute for Global Initiatives and the Center for Excellence in Teaching and Learning.

# *KSU says farewell, and welcome*

## comings and goings

KSU's successes in becoming a nationally recognized learning-centered university are due in no small part to great leadership.

During the late spring and early summer of 2008, KSU bid farewell to two superior leaders who, through the decades, were dedicated to enhancing learning opportunities for all students and to increasing the university's stature among its peer institutions: Nancy S. King, vice president for student success and enrollment services, and Timothy S. Mescon, dean of the Michael J. Coles College of Business.

While saying farewell to longtime leaders, KSU extended a warm welcome to new leaders in the areas of education and diversity: Arlinda Eaton, dean of the Leland and Clarice C. Bagwell College of Education, and Jennifer Wade-Berg, chief diversity officer. KSU also gave new leadership roles to current administrators and faculty — Teresa M. Joyce was named associate provost, and Robert C. Paul, KSU's new director of sustainability.



Arlinda Eaton was named dean of the Bagwell College of Education. Eaton was associate dean at the Michael D. Eisner College of Education at Cal State Northridge for eight years before taking the dean's job at the Bagwell College.



Timothy S. Mescon, dean of KSU's Coles College of Business for 18 years and the Tony and Jack Dinos Eminent Scholar, was selected in summer 2008 to become the president of Columbus State University.



Jennifer Wade-Berg was selected in spring 2008 as KSU's first chief diversity officer — an emerging position on university campuses across the country as American society grows increasingly diverse. Wade-Berg came from the University of Colorado Denver.



For more than 35 years, Nancy S. King taught and encouraged students to become the best. Rising through the ranks from English instructor to student success guru, King helped shape the comprehensive KSU student experience.



# *Not an ending, but a beginning*



KSU's first students receiving master's degrees of social work were among the graduates at spring 2008 commencement exercises.



Emily Jennette, a KSU alumna and Georgia's 2008 Teacher of the Year, spoke to hundreds of graduates during KSU's fall 2007 commencement. More than 1,500 students received degrees. Other speakers included Arthur Harris and Dana R. Hermanson, the Dinos Eminent Scholar Chair of Private Enterprise in the Coles College of Business.

Bernard Osher



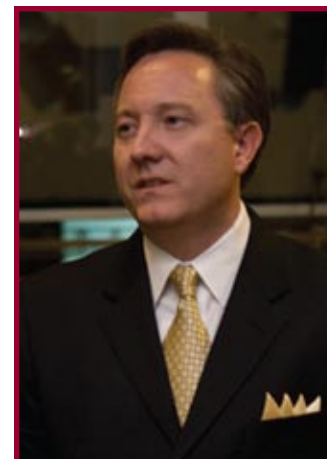
## commencement

Commencement is one of the signature events on any university campus, and KSU is no exception. Amid the pomp and circumstance of students shaking hands and receiving degrees is the core meaning of the ceremony: it is not an ending with the completion of a study program, but the beginning of a new phase in students' lives.

As KSU grows bigger and better, more students are graduating on time, and every graduating class each semester marks a record number of students embarking on their new beginnings. The university conferred a record 4,325 degrees during fiscal year 2008.

Reminding students of those new beginnings, and of the boundless opportunities awaiting them, were commencement speakers who enlightened, engaged and challenged KSU's newest alumni.

State Sen. Doug Stoner served as one of several speakers during spring 2008 commencement.



During summer 2007 commencement, 81-year-old Arthur Harris — co-founder of Atlanta-area business Spa Sydell — graduated cum laude with a Bachelor of Arts in English as KSU's oldest graduate.

## HONORARY DOCTORATES

For the 11th and 12th times in KSU's history, the university awarded honorary doctorates in humane letters — the greatest honor it can bestow — to two of its most generous benefactors: former KSU Foundation Chair Thomas M. Holder and philanthropist Bernard Osher.

Holder, who was awarded an honorary doctorate during the December 2007 commencement exercises, led the KSU Foundation from 2002 to 2007 and labored behind the scenes to help make the university's expansion dreams a reality — supporting progress in student housing and parking expansion, as well as academic excellence. Holder and his wife, Beth, recently provided a \$1 million endowment encouraging faculty research, teaching and community engagement.

Osher was honored with an honorary doctorate during one of the May 2008 commencement exercises and served as graduation speaker. Osher has provided \$2.2 million in grants and endowments to KSU to ensure the success of its Osher Lifelong Learning Institute.



Dana R. Hermanson receives the Distinguished Professor Award from President Daniel S. Papp.



FOUNDATION  
AWARDS

The KSU Foundation recognizes excellence among KSU’s faculty through its prizes and awards. The following faculty members were among those honored in August 2007 by the Foundation, which offers the largest faculty awards program among University System of Georgia institutions:

- Distinguished Professor Award: Dana R. Hermanson, Dinos Eminent Scholar Chair of Private Enterprise and professor of accounting;
- Distinguished Teaching Award: David M. Johnson, assistant professor of English;
- Distinguished Service Award: Thomas H. Keene, professor of history; and
- Distinguished Scholarship Award: Gabriel G. Ramirez, professor of finance.

# Enhancing academics and learning

## faculty spotlight

Kennesaw State’s faculty members are key to the progress the university is making in enhancing its academic reputation in the country, ensuring that students receive a quality education that prepares them for the world.

KSU faculty were honored by the university and outside organizations with awards recognizing academic excellence, as well as with grants affording faculty the opportunity to engage in research, scholarship and outreach.

Kennesaw State faculty and staff were awarded approximately \$4 million in local, state, federal and non-governmental organization grants to help further research and scholarship during fiscal year 2008, aided by KSU’s Office of Sponsored Programs in navigating the grant process. Such grants supported a range of scholarship, including a National Institutes of Health grant received by biotechnology professor John C. Salerno for his research into a key neurotransmitter in the human body.



Mary Garner, associate professor of mathematics, was honored in November 2007 by the Board of Regents with the 2007 Regents’ Award for Excellence in Teaching.



Among the new, talented faculty bringing real-world experience to KSU students in fiscal year 2008 was the university’s first Regents’ Professor, Charles W. Hofer, professor of management, who joined KSU from the University of Georgia.



Ben Johnson, associate dean for community partnerships and global initiatives at the WellStar College of Health and Human Services, is working to encourage athletics opportunities for the disabled worldwide, garnering \$1.5 million from the U.S. Department of State in grants and in-kind contributions.



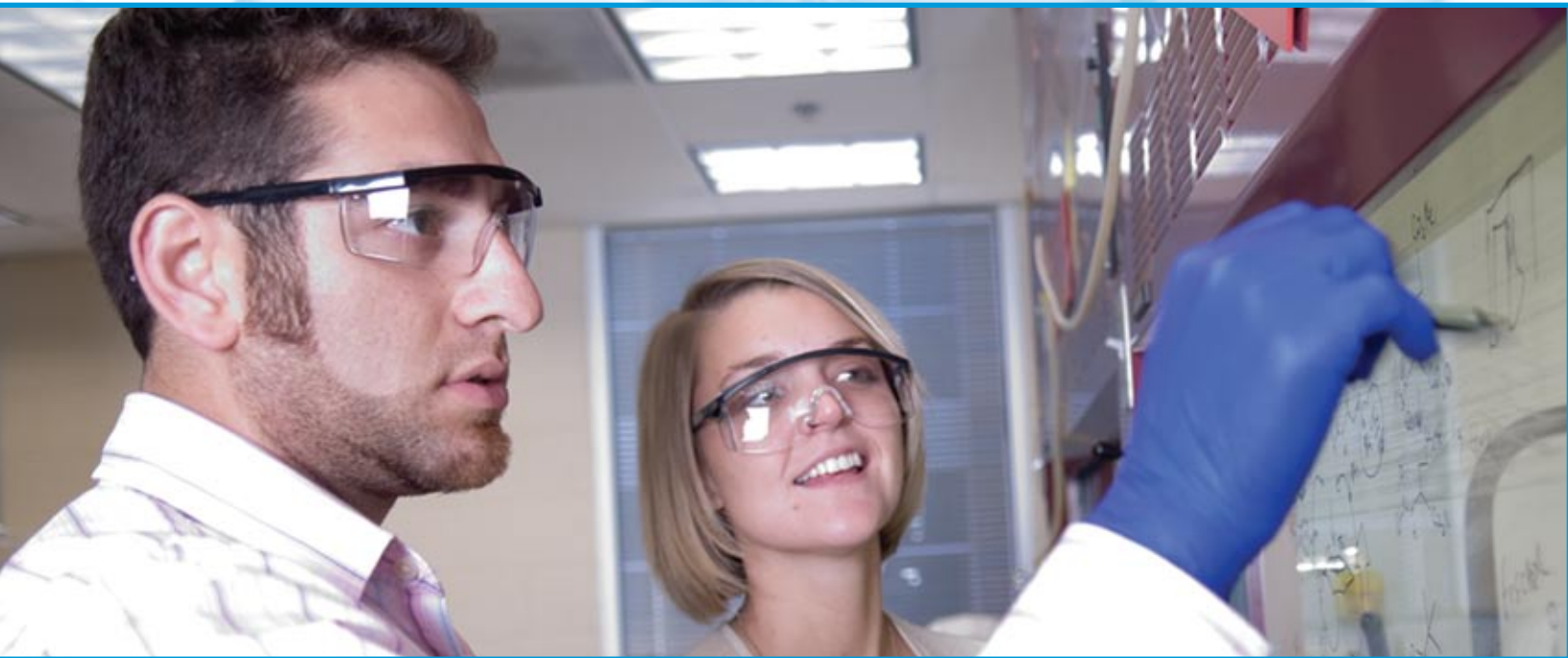
Professor John C. Salerno received an NIH grant of \$201,000 in spring 2008. The biotechnology expert is researching the mysteries of enzymes that produce nitric oxide. Read more about faculty and staff grants at [www.kennesaw.edu/osp](http://www.kennesaw.edu/osp).



# Measures of our success



The Cox Family Enterprise Center is the first academic-based family business program in the world. *Fortune Small Business* recently recognized the Coles College as one of the six schools "Best for Family Business."



Boosting KSU's reputation this year was \$750,000 in funding awarded to the university from the Robert Noyce Scholarship Program and the National Science Foundation to encourage talented science, technology, engineering and math (STEM) majors to become math and science teachers — subject areas for which there is a great need for more educators in Georgia. KSU also received another NSF grant for more than \$500,000 in scholarships for undergraduate STEM majors. These scholarships will help propel KSU toward its goal of becoming the top producer of math and science teachers in the nation.

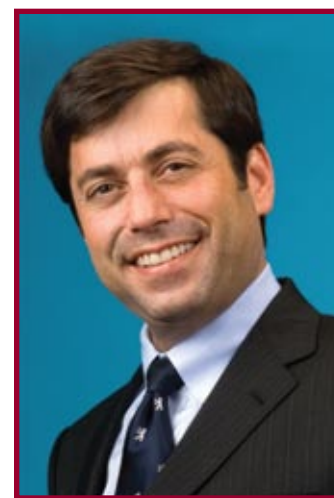
## applause and affirmation

In fiscal year 2008, Kennesaw State received several recognitions, awards and accolades, which reaffirmed the university's growing reputation in academics, scholarship and service.

During fiscal year 2008, *U.S. News & World Report* recognized KSU's first-year experience program in its annual "America's Best Colleges" edition under "Programs to Look for." This was the fifth consecutive recognition of the program, which helps first-year students connect with each other and with faculty, staff and resources to navigate university life.

*Fortune Small Business* magazine recognized the Cox Family Enterprise Center in the Coles College of Business as one of the six best business programs in family business.

The *Princeton Review* and *Entrepreneur* recognized Kennesaw State and its Coles College of Business in the publications' fifth annual listing of the nation's top 50 entrepreneurial education programs. The university received an honorable mention in this prestigious survey.



Joe Astrachan, director of the Cox Family Enterprise Center, Wachovia Eminent Scholar Chair of Family Business, and professor of management.



KSU 1101 is part of the nationally acclaimed first-year experience program.

KSU's customer service "New Hires Project," led by Martha Roth (right), won a silver award.



## INCREASING CUSTOMER SERVICE

Kennesaw State has been recognized by the highest levels of Georgia's government for its part in overall efforts to make the state customer-friendly.

Georgia Gov. Sonny Perdue awarded KSU three customer service awards as part of the state's "Team Georgia" customer service initiative, launched in 2007, including honors for the university as a whole, as well as additional honors:

- top Individual Honor, Linda M. Lyons, KSU's customer service "champion," who has led the university's efforts to be customer-friendly; and
- top Customer Service Team, KSU Financial Aid Office.

Additionally, Kennesaw State stood out among its peers in the University System of Georgia, garnering the "Customer Service Institution of the Year" award, as well as a gold customer service award for customer service improvement in the Coles College of Business. Lyons also was honored with a gold award for her outstanding customer service leadership for establishing the "Shining Star" program, which rewards outstanding service at the university.





---

Kennesaw State University Annual Report, Fiscal Year 2008

Writer  
Jeremy Craig

Design and Thematic Concept  
Resonance Inc.

Layout Support  
KSU Creative Services

Photography  
Jim Bolt, Steve Thackston

Assistant Director for Creative Services  
Ray Burgos

Media Production Supervisor  
Tawania Thigpen

Director of University Relations  
Frances Harrison

Special Assistant to the President for External Affairs  
Arlethia Perry-Johnson

For more information, or to obtain additional copies of this report, please contact:

Office of External Affairs  
Kennesaw State University  
1000 Chastain Road  
MD 0101, KH, Bldg. 1  
Kennesaw, GA 30144  
Telephone (770) 423-6033  
[www.kennesaw.edu](http://www.kennesaw.edu)